

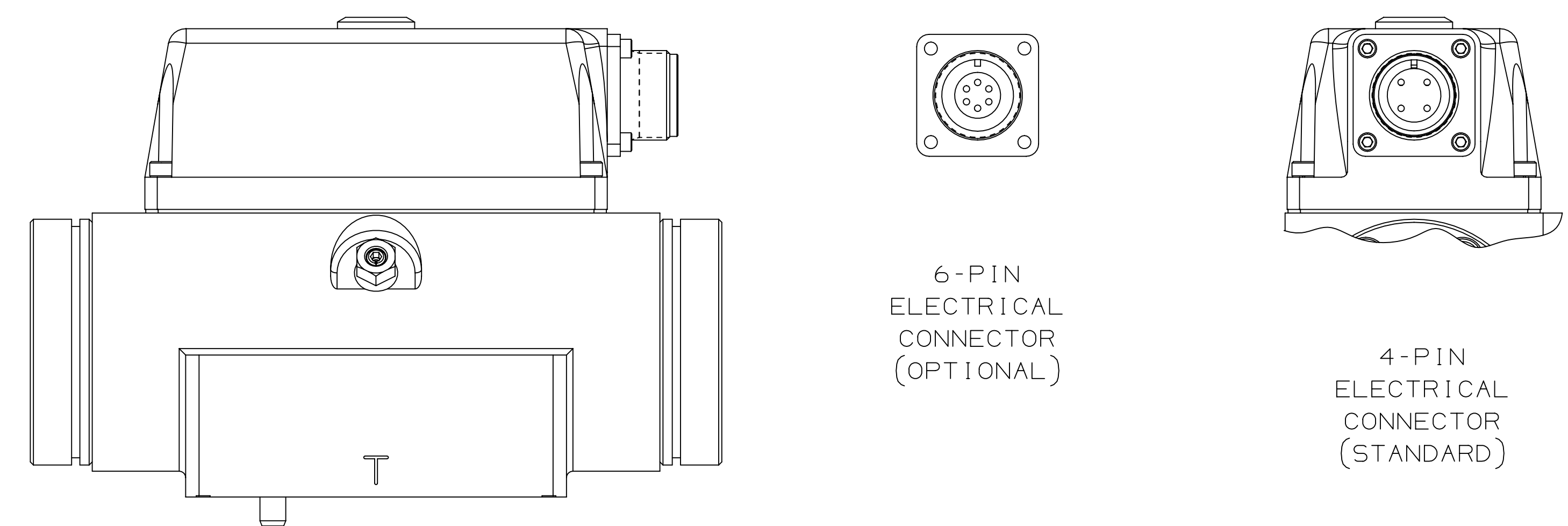
ZONE		REV	DESCRIPTION	DATE	APPROVED
	B	SEE	EO UE1039614	2011025	KJY/MEL
	C	SEE	EO UE1063810	20170508	MJN/RJM
	D	SEE	EO UE1065485	20180215	MJN/MWB
	E	SEE	EO UE1068396	20191017	MJN/RJM
	F	SEE	EO UE1069386	20191031	MJN/RJM

THIS TECHNICAL DATA/DRAWING/DOCUMENT CONTAINS MOOG PROPRIETARY AND CONFIDENTIAL INFORMATION. SUBSIDIARIES EXCEPT AS EXPRESSLY GRANTED BY CONTRACT OR BY OPERATION OF LAW AND IS RESTRICTED TO USE BY ONLY MOOG EMPLOYEES AND OTHER PERSONS AUTHORIZED IN WRITING BY MOOG OR AS EXPRESSLY GRANTED BY CONTRACT OR BY OPERATION OF LAW. NO PORTION OF THIS DATA/DOCUMENT SHALL BE REPRODUCED OR DISCLOSED OR FURNISHED IN WHOLE OR IN PART TO OTHERS OR USED BY OTHERS FOR ANY PURPOSE WHATSOEVER EXCEPT AS SPECIFICALLY AUTHORIZED IN WRITING BY MOOG INC. OR MOOG INC. SUBSIDIARY.

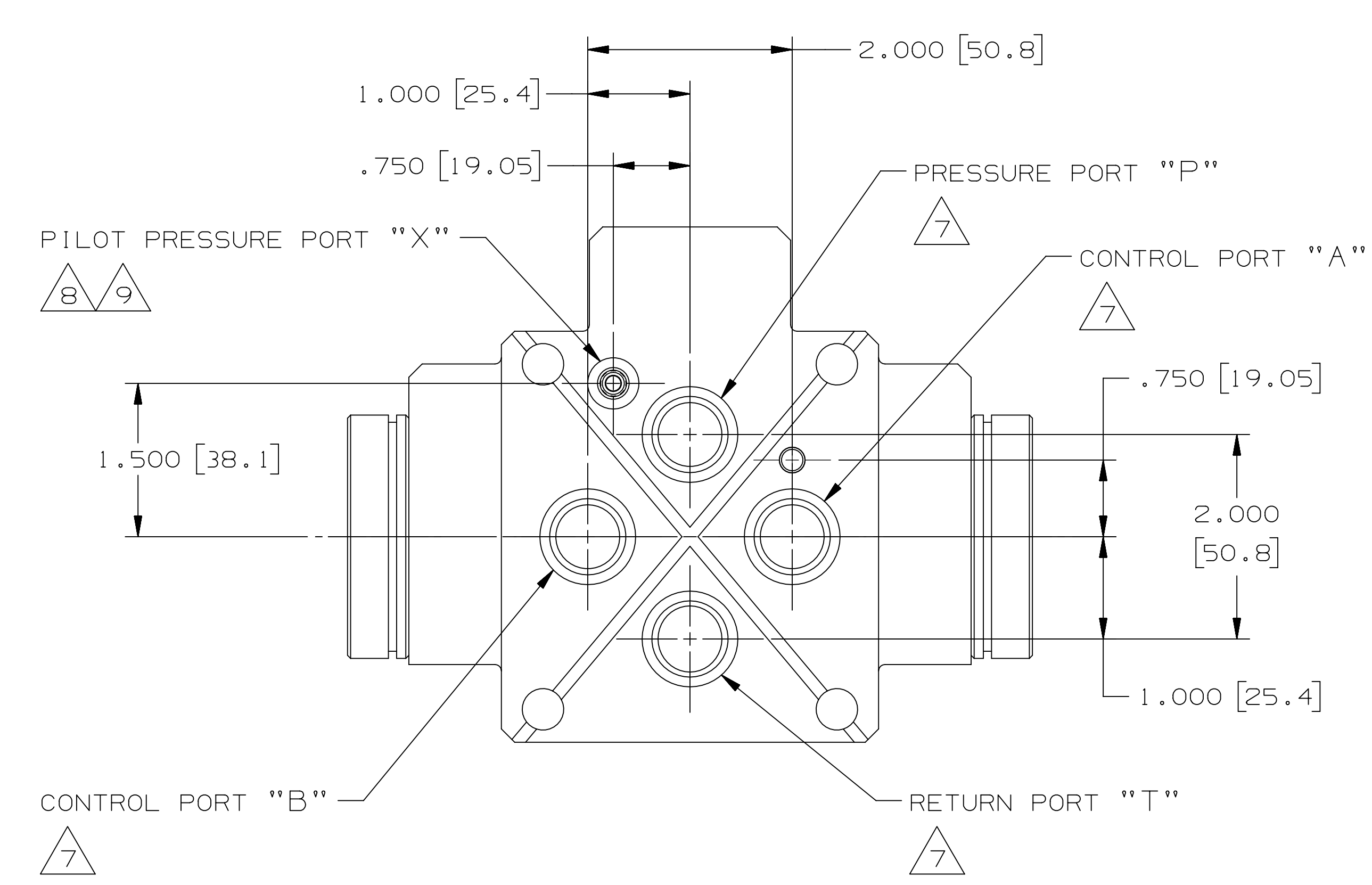
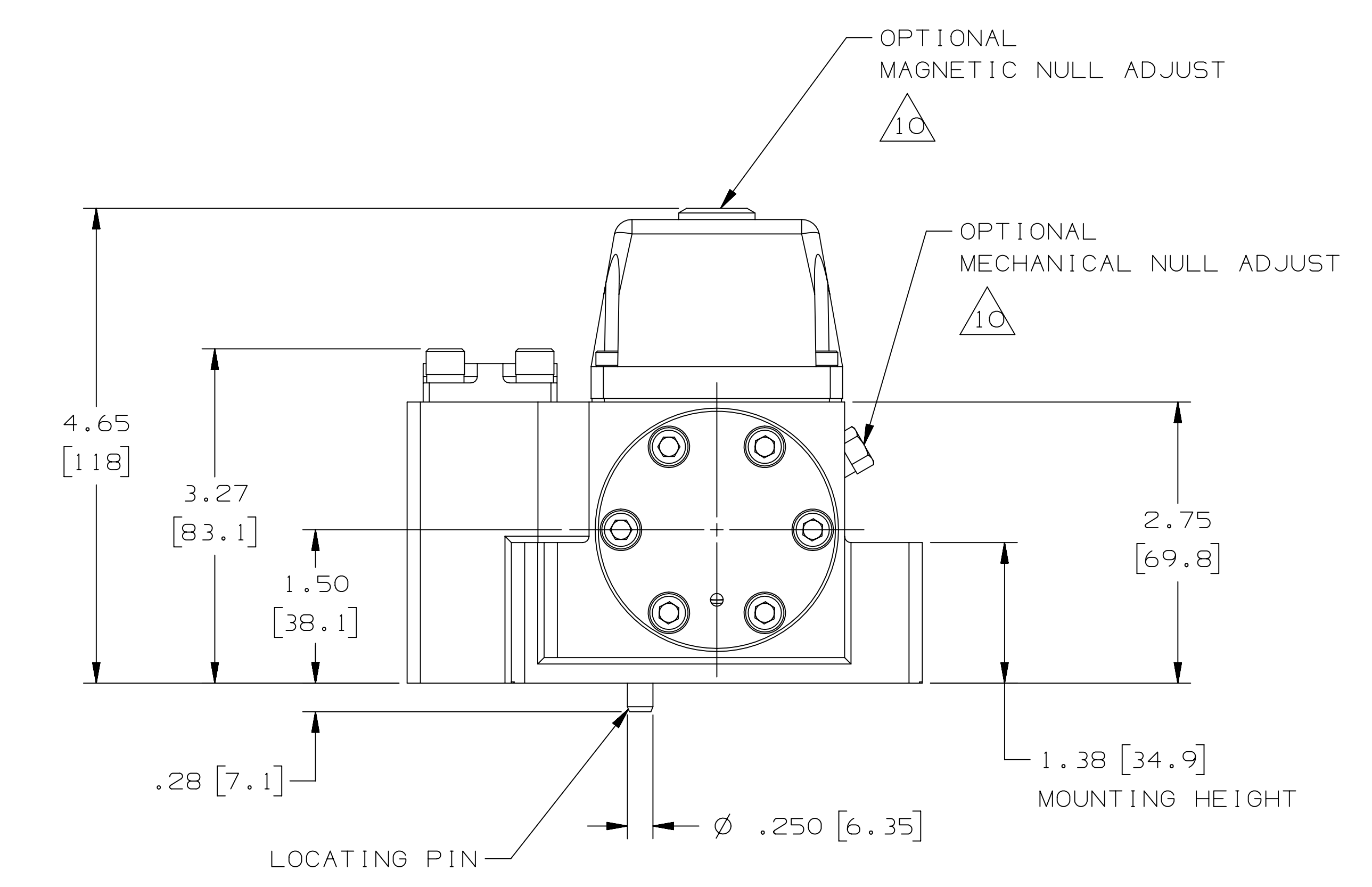
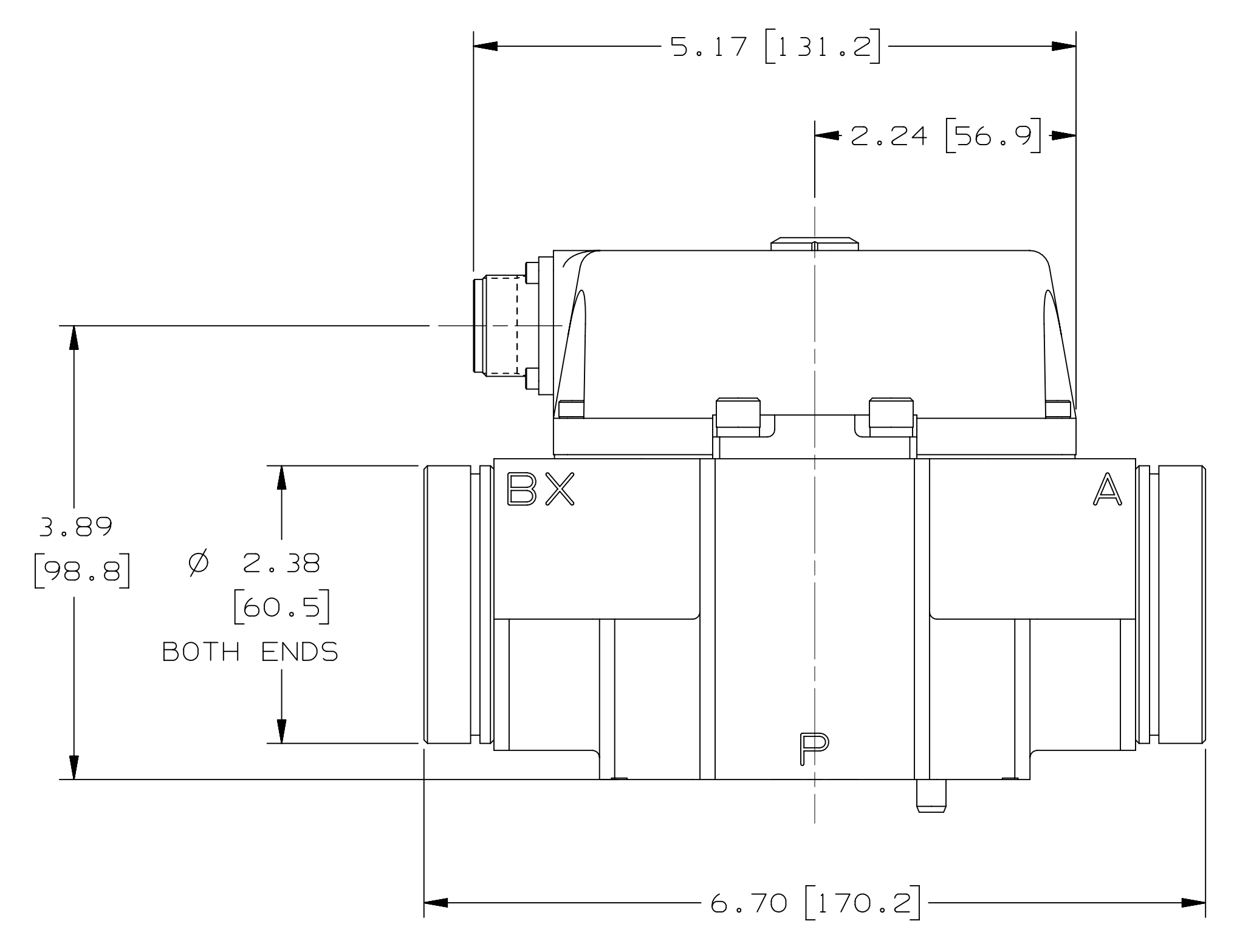
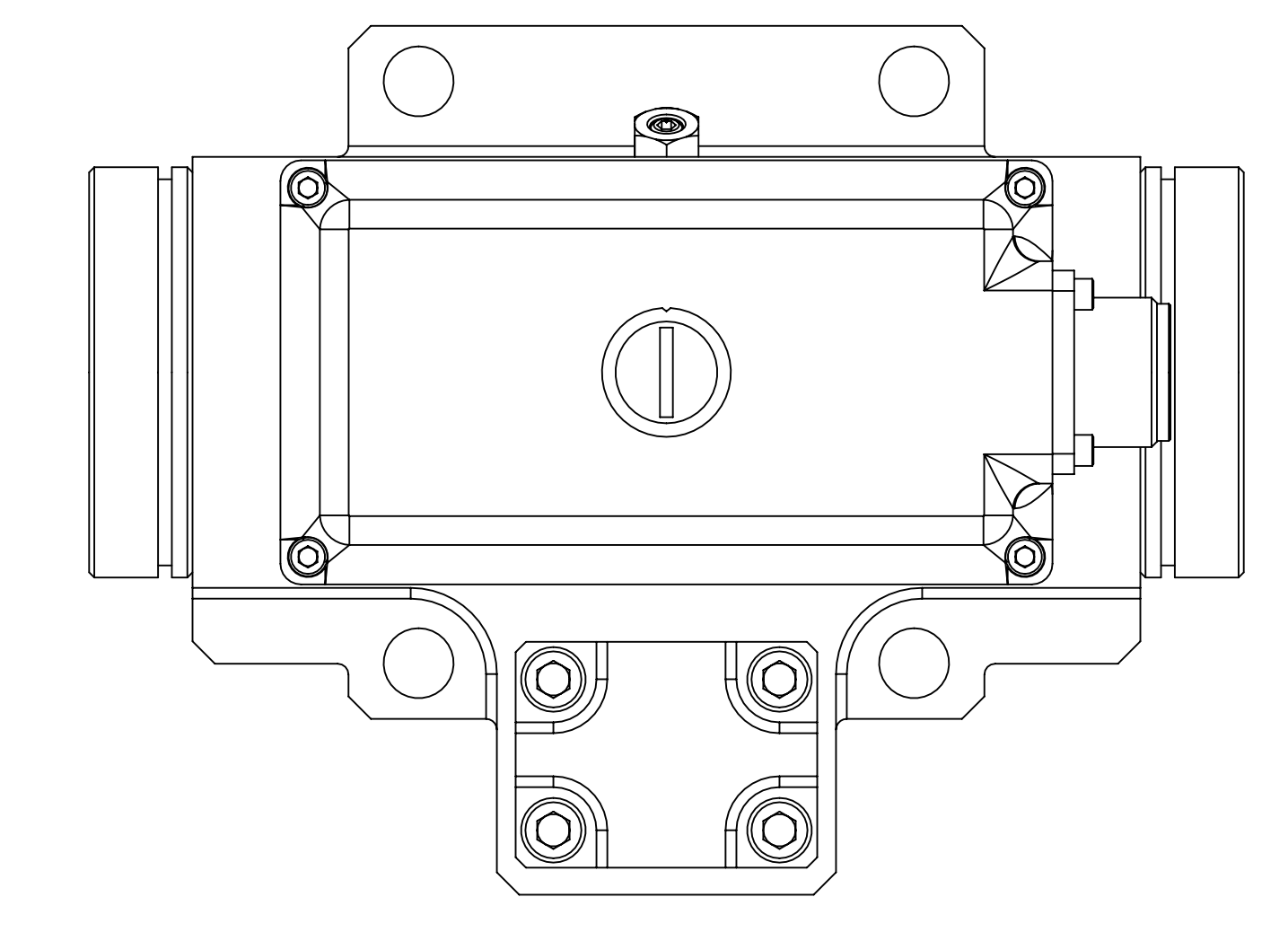
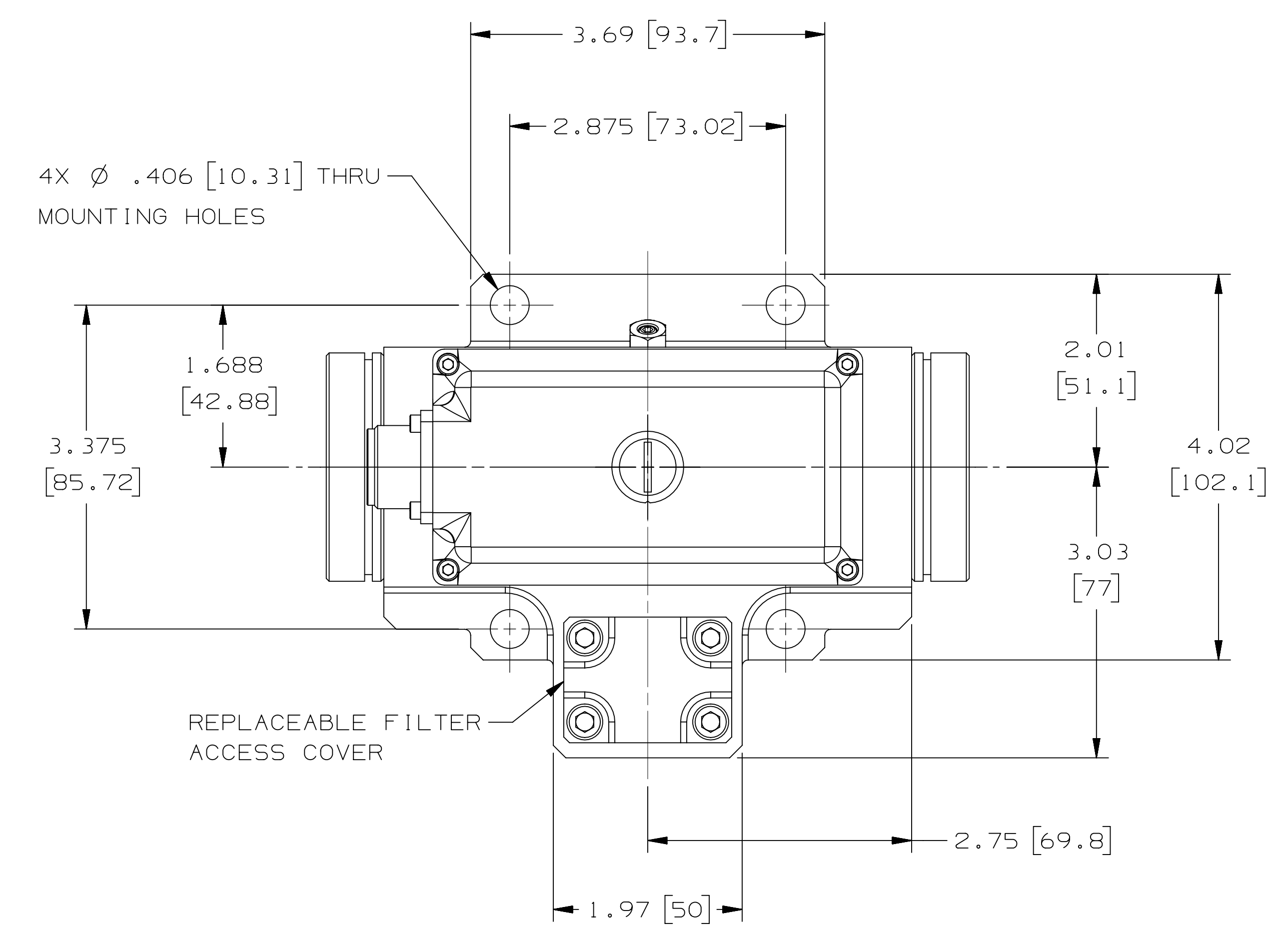
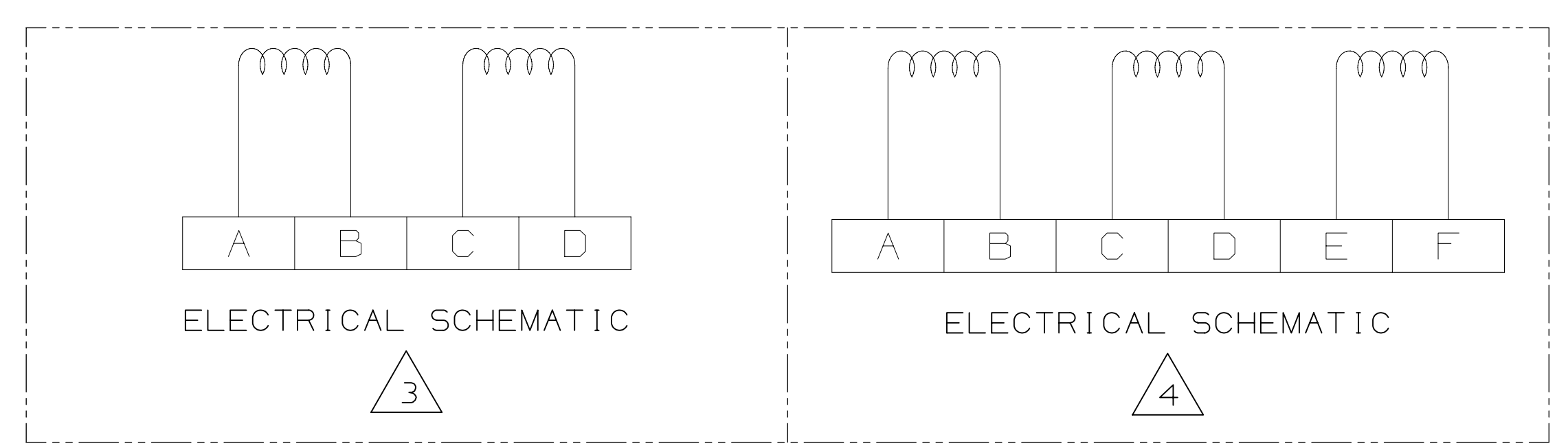
THIS DOCUMENT CONTAINS TECHNOLOGY SUBJECT TO THE U.S. EXPORT ADMINISTRATION REGULATIONS (EAR) AND MAY NOT BE EXPORTED OR TRANSFERRED TO ANY UNLICENSED PERSON, COUNTRY, OR COMPANY, BY ANY MEANS, OR FOR ENVOIES REQUIRING A LICENSE, WITHOUT PRIOR WRITTEN APPROVAL FROM THE U.S. DEPARTMENT OF COMMERCE, BUREAU OF INDUSTRY AND SECURITY (BIS). DIVERSION CONTRARY TO U.S. LAW IS PROHIBITED.

NOTES:

- FLUIDS AND SEAL MATERIALS:  
FLUID TYPE: DEPENDENT ON SEAL MATERIAL.  
SEAL MATERIAL:  
PETROLUUM BASE: BUNA OR VITON  
WATER-GLYCOL: BUNA  
PHOSPHATE ESTER: VITON  
RECOMMENDED VISCOSITY RANGE AT 100°F (38°C): 10 TO 97 MM<sup>2</sup>/S (cSt).  
CLEANLINESS LEVEL PER ISO 4406:  
NORMAL LIFE: 17/14/11  
LONG LIFE: 15/13/10
- STANDARD AMBIENT TEMPERATURE RANGE: 122°F (50°C) MAX;  
FLUID TEMPERATURE RANGE: -20°F TO 275°F (-29°C TO 135°C).
- POLARITY OPERATION: FLOW OUT CONTROL PORT "B" WHEN:  
SERIES COILS: A+, D-, B & C TIED  
PARALLEL COILS: A & C TIED +, B & D TIED -  
SINGLE COIL: A+, B- OR C+, D-
- POLARITY OPERATION: FLOW OUT CONTROL PORT "B" WHEN:  
SINGLE COIL: A+, B- OR C+, D- OR E+, F-
- ELECTRICAL CONNECTOR MATES WITH:  
4-PIN: MS3106-145-25 OR EQUIVALENT  
6-PIN: MS3106-145-65 OR EQUIVALENT
- DIMENSIONS ARE FOR REFERENCE ONLY.  
DIMENSIONS IN BRACKETS ( ) ARE IN MILLIMETERS.
- PORTS P, T, A, B:  
□ .746 [18.95] I.D. X .937 [23.8] O.D. √ .052 [1.32].  
O-RINGS: .801 [20.35] I.D. X .070 [1.78] CROSS SECTION (UNIVERSAL SIZE -019).
- PORT X:  
□ .311 [7.9] I.D. X .502 [12.75] O.D. √ .052 [1.32].  
O-RING: .364 [9.25] I.D. X .070 [1.78] CROSS SECTION (UNIVERSAL SIZE -012)



- VALVES ARE SUPPLIED WITH PROVISIONS FOR EITHER INTERNAL OR EXTERNAL PORTING OF PILOT STAGE SUPPLY.
- FLOW OUT CONTROL PORT B: INCREASES WITH CLOCKWISE ROTATION.
- SURFACE TO WHICH VALVE IS MOUNTED REQUIRES  $\sqrt[63]{1.6}$ ,  $\square .002 [0.05]$ .
- SUGGESTED MOUNTING SCREWS:  
3/8-16 X 2.00 LONG (M10 X 50 LONG) SOCKET HEAD CAP SCREWS.
- APPROXIMATE WEIGHT:  
ALUMINUM MATERIALS (3000 PSI).....8 LBS.  
STEEL MATERIALS (5000 PSI).....16 LBS.



REFERENCE MOUNTING PATTERN SPECIFICATION  
150 10372-06-05-0-92

INTERNATIONAL PART

UNLESS OTHERWISE SPECIFIED: ANGULAR: .XXX FILLETS: RAD EDGES: RAD OR CHAM SURFACE FINISH: PER ANSI Y14.28 & B46.1 CONCENTRIC DIAMETERS: [1.000] DRAUGHT POINTS: 1:1 ALL DIMENSIONS ARE IN INCHES PART TO BE FREE OF BURRS	INTERPRET DRAWING PER MIL-STD-100 DIMENSIONING AND TOLERANCING PER ASME Y14.5M-1994	CONTRACT NO. PREPARED: L. WENDEL 3008092 CHECKED: DK/HL 3008092 MGR ENGR DES ENGR PRD ENGR APL ENGR MFG QUAL	MOOG INC. MOOG INC., EAST AURORA, NY 14052 TITLE: INSTALLATION, -072 SERIES, MAGNETIC NULL ADJUST SIZE: E 94697 SCALE: 1/1	MOG NO. CA79668 SHEET 1 OF 1
---	---	--	--	------------------------------------

CA79668

UNIGRAPHICS DATA BASE