

HYDRAULIC SIMULATION TABLE NEXT GENERATION TESTING



DESIGNED FOR LEADING EDGE AUTOMOTIVE TESTING
APPLICATIONS REQUIRING UNSURPASSED PERFORMANCE,
RELIABILITY AND VERSATILITY



STATE-OF-THE-ART HEXAPOD DESIGN FOR WORLDWIDE TEST APPLICATIONS

Unsurpassed innovation and technological expertise combined with close customer collaboration make Moog a leader in the design and development of high-performance 6 Degree-of-Freedom (DOF) electric and hydraulic motion platforms.

The proven technology expertise of Moog combined with the world class performance of Moog Actuators, Servo Valves and Digital Controllers deliver long-lasting solutions to meet your challenges today—and tomorrow.

Our total focus on meeting your unique test requirements means you can rest assured you're using the most flexible, highest performance test equipment available anywhere.

The application of the latest testing techniques has become a cornerstone for creating successful new designs, ensuring shorter vehicle time-to-market, managing increased regulatory pressures and maintaining cost efficiencies.

Wherever test and development engineers are pushing the limits of automotive design, the Moog Simulation Table is an indispensable tool throughout the vehicle development process.

MEETING THE CHALLENGE OF A NEW TESTING GENERATION WITH MAXIMUM VERSATILITY AND STIFFNESS

The hexapod configuration used by the Simulation Table is the optimum design to achieve simulation and test capability using acceleration, force and displacement inputs, and to reproduce data collected on proving grounds regardless of your test type, method or specimen.

By understanding today's test trends and challenges, and listening closely to the needs of customers around the world, we provide the right tools and proactive expertise to take automotive test applications further than you ever thought possible.

To meet the high demand for hydraulic Simulation Tables to accommodate loads up to 680 kg (1,500 lb), we developed a standard Simulation Table based on a new generation of hydrostatic actuators providing more stiffness and versatility.



KEY FEATURES TO SUPPORT YOUR TESTING NEEDS

KEY FEATURES

Recommended tests

Vibration, durability, squeak and rattle, noise and harshness.

6 Degree of Freedom motion

Translations: vertical, lateral, and longitudinal
Rotations: pitch, yaw, and roll

Working in synchronization

Six identical actuators performing synchronously for each motion resulting in higher forces and accelerations.

Degree-of-Freedom Control

DOF control allows you to simply put in the frequency and amplitude for a desired direction then the controller and kinematics take over to achieve the expected movement result.

Performance

The industry's most innovative engineering design incorporates proprietary software and digital control, along with the highest quality components to ensure optimal performance.

USER BENEFITS

High versatility

Specific architecture and design (for example, no bell-cranks or tie-rods) to reach higher test frequencies, providing significantly higher system strength and stiffness, so a wide range of tests can be run.

User-friendly

Minimal moving parts make the Simulation Table quick to install and commission, easy to maintain, and user friendly when accessing the table and specimen. The design also makes it simple to run tests efficiently through integrated control hardware and software.

Extremely small footprint

Using only one third of the space required by classic systems, this small footprint makes it an integrated solution that is easy to position, run and control anywhere in your test lab.

Maximum flexibility

Accommodates integration of environmental chambers for temperature and humidity testing in connection with vibration testing.

Increased productivity in a testing laboratory environment

The geometry of the assembly of actuators offers a convenient working height for the operator to mount and inspect the test specimen. (No work platform required.)

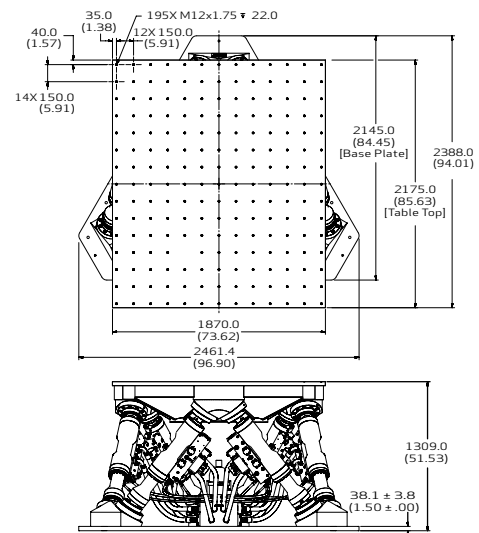
STANDARD SIMULATION TABLES FOR STIFFNESS AND VERSATILITY

Moog's Standard Simulation Tables are the industry's most innovative engineering design incorporating proprietary software and digital control. Our high quality components ensure optimal performance for test capability using acceleration, force and displacement inputs regardless of your test type, method or specimen.



STANDARD SIMULATION TABLE

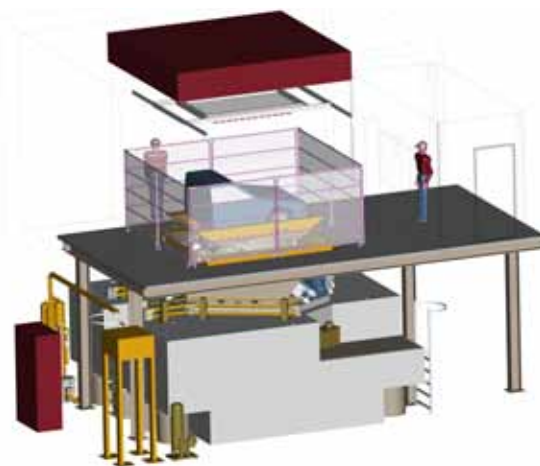
PARAMETER	Standard Simulation Table
System Payload	680 kg (1,500 lb)
Table Mass	758 kg (1,670 lb)
Total Payload (combined)	1,440 kg (3,170 lb)
Table Size (LxW)	2,175 x 1,870 mm (7.1 x 6.1 ft)
Table Mounting Pattern	150 x 150 mm (5.9 x 5.9 in)
Table Mounting Hole Size	M12
Actuator Peak Force	54 kN (12.2 kip)
Degree of Freedom	6 DOF Stewart Hexapod
Frequency	100 Hz
Noise Level	
Excursion	
(Z) Heave (Vertical)	±122 mm (4.8 in)
(Y) Lateral	±174 mm (6.9 in)
(X) Longitudinal	+216/-177 mm (+8.5 / -7.0 in)
Roll	±9 deg (0.16 rad)
Pitch	±8.5 deg (0.15 rad)
Yaw	±12 deg (0.21 rad)
Velocity	
(Z) Heave (Vertical)	±1.65 m/sec (65 in/sec)
(Y) Lateral	±1.62 m/sec (64 in/sec)
(X) Longitudinal	±1.65 m/sec (65 in/sec)
Roll	±120 deg/sec (2.09 rad/sec)
Pitch	±119 deg/sec (2.08 rad/sec)
Yaw	±145 deg/sec (2.53 rad/sec)
Acceleration	
(Z) Heave (Vertical)	±108 m/sec ² (11 g)
(Y) Lateral	±64 m/sec ² (6.6 g)
(X) Longitudinal	±57 m/sec ² (5.8 g)
Roll	±10,000 deg/sec ² (174 rad/sec)
Pitch	±8,500 deg/sec ² (148 rad/sec)
Yaw	±7,500 deg/sec ² (131 rad/sec)



This technical data is based on current available information and is subject to change at any time by Moog. Specifications for specific systems or applications may vary.

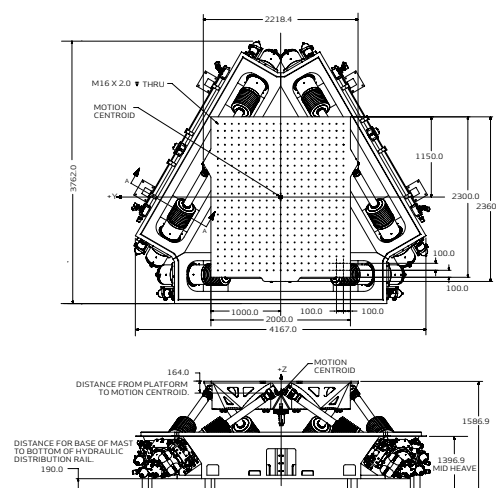
CUSTOMIZED SIMULATION TABLES DESIGNED FOR YOUR UNIQUE REQUIREMENTS

Moog's wide array of technologies and design expertise mean your Simulation Table can be tailored to meet your specific performance needs. Our solutions address your specific requirements whether it is higher frequency, payload, footprint, performance, climatic chamber, acoustic chamber, hydrostatic bolt joints or fixed based actuator design.



CUSTOMIZED SIMULATION TABLE WITH CLIMATIC CHAMBER

PARAMETER	Example of a customized Simulation Table
System Payload	600 kg (1,322 lb)
Table Mass	742 kg (1,635 lb)
Total Payload (combined)	1342 kg (2,950 lb)
Table Size (LxW)	2,300 x 2,000 mm (7.5 x 6.6 ft)
Table Mounting Pattern	200 x 200 mm (8 x 8 in)
Table Mounting Hole Size	M16
Actuator Peak Force	53 kN (12 kip)
Degree of Freedom	6 DOF Stewart Hexapod
Frequency	150 Hz
Noise Level	60 dB(A)
Excursion	
(Z) Heave (Vertical)	+163/ -140 mm (6.4/ -5.5 in)
(Y) Lateral	± 103 mm (4 in)
(X) Longitudinal	±118 mm (4.66 in)
Roll	±7.6 deg (0.13 rad)
Pitch	+7.2/ -8.4 deg (0.13/ -0.15 rad)
Yaw	±5.3 deg (0.09 rad)
Velocity	
(Z) Heave (Vertical)	±1,753 m/sec (69 in/sec)
(Y) Lateral	±1,218 m/sec (48 in/sec)
(X) Longitudinal	±1,405 m/sec (55 in/sec)
Roll	±95.6 deg/sec (1.67 rad/sec)
Pitch	±88.9 deg/sec (1.55 rad/sec)
Yaw	±62.5 deg/sec (1.09 rad/sec)
Acceleration	
(Z) Heave (Vertical)	+109/ -89.5 m/sec ² (+11.1/ -9.9 g)
(Y) Lateral	±63.7 m/sec ² (6.5 g)
(X) Longitudinal	±80.5 m/sec ² (8.2 g)
Roll	±4,175 deg/sec (72.9 rad/sec)
Pitch	+4,210/ -5,130 deg/sec ² (73.5/ -89.5 rad/sec)
Yaw	±8,900 deg/sec ² (155 rad/sec)



This technical data is based on current available information and is subject to change at any time by Moog. Specifications for specific systems or applications may vary.

GENUINE TEST CONTROLLERS TO ENSURE BEST PERFORMANCE

Moog delivers the flexibility, innovation and trusted solutions you need for a smart approach to automotive testing. The heart of all our solutions is the control hardware and software that sets the pace for the industry.

TEST CONTROLLERS

One advanced control for all your tests, the Simulation Table utilizes the same Automotive Test Controller as other Moog solutions.

- Advanced control loop technology
- Unique control algorithm
- Function generator—Play out cyclic commands including sine, triangle, square wave and more.
- Random Wave—create random waveform that allows variable PSD with multiple break points across the frequency spectrum.
- Sweep function generator—sweep through a sine function with closed loop control of defined amplitudes at various frequencies.
- Random time history iteration and durability test playback.



Channels	<ul style="list-style-type: none"> • 6 channels expandable up to 32 channels
Housing	<ul style="list-style-type: none"> • 19 inch cabinet 1.8 m (70.9 in) high • Integrated 17" full VGA color display • Climate controlled cabinet
Servo Controller	<ul style="list-style-type: none"> • Up to 2.5 kHz control loop (software selectable) • Integrated DOF control • Delta P compensation included • Moog unique control loop • Three variable control possibility (Velocity, Position, Acceleration)
Function Generator	<ul style="list-style-type: none"> • Frequency range 0.01 to 500 Hz • Waveforms: sine, sawtooth, block/square, ramp, rounded ramp, exponential • Analogue input can be used as command • Complex simulation spectrum support including spectral density (psd frequency definition) • Constant amplitude and phase matching
Standard Inputs (Per Channel)	<ul style="list-style-type: none"> • 2x high resolution (0.03 %) with selectable gain and bridge excitation. • Pot meter input (0.03 %) (+/- 5 V 5mA) or LVDT input (0.03 %) with LVDT excitation (5 V RMS @ 3.5 kHz) • Encoder, absolute (SSI) maximum 32 bit or relative 10 bit • 16 bit input (+/- 10 V)
Standard Outputs (Per Channel)	<ul style="list-style-type: none"> • 16 bits ± 100 mA valve driver output, with a limit in software from 0 to 100% or (hardware selectable) +/- 10 V output • 2 x 16 bit D/A converters, +/- 10 V
Optional Items	<ul style="list-style-type: none"> • Digital I/O board containing 8 inputs and 8 outputs • Analog input board containing 16 inputs • Strain amplifier board (6 channels, 1/4, 1/2 and full bridge 120/350 ohm) • Add onboard for 3 stage Servo Valve • Accelerometer input board 6 channels • Uninterruptable Power Supply (UPS)

OPTIONAL FOR MULTICHANNEL TESTING

Manifold Control Unit and Matrix Driver Unit



In case more than one Hydraulic Service Manifold (HSM) needs to be controlled independently and multiple station functionality is required, the Manifold

Control Unit and the Matrix Driver Unit (MDU) can be used. The Manifold Control Unit (MCU) contains 4 connections for an HSM manifold (low/high pressure).

The Matrix Driver Unit can be used as a device to connect the safety systems for user defined configurations in stations of the Automotive Test system. In the Automotive Test system you can create your own station assignments and manage the associated safety system with the rotary switches on the MDU.

INTEGRATED TEST SOFTWARE TO ENSURE BEST FLEXIBILITY

Moog provides open architecture control software developed specifically for your unique test needs in durability and fatigue, simulation, vibration, measurement and analysis.

The Moog Integrated Test Suite offers a unique straightforward approach to inherently complex processes.

For example, it makes simulation using iteration, a notoriously complex and time-consuming test technique, easy and fast to use through one of its existing modules (Moog Runner).

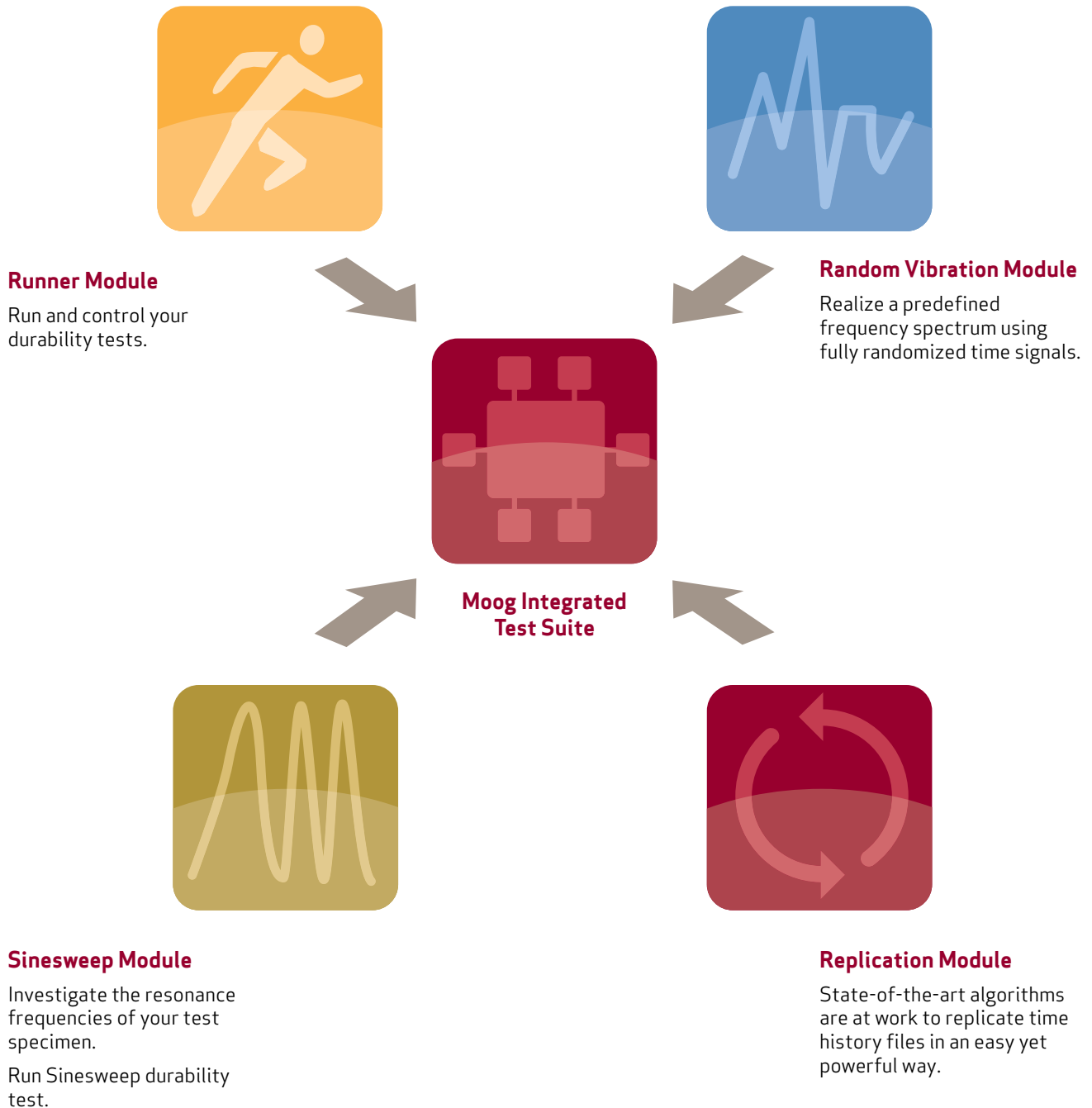
The Moog Integrated Test Suite gives access to different modules: Runner, Replication, Sinesweep and Random Vibration and to specific advanced features as required.



MODULES BASED ON THE INTEGRATED TEST SUITE

The same module can be used for different test systems in your test labs and test data can be centrally accessed, dramatically reducing time.

The Integrated Test Suite gives access to all modules: Runner, Replication, Sinesweep and Random Vibration and to specific advanced features as required.



COMPONENTS TO ENSURE BEST PRECISION

Each Moog Simulation Table incorporates world class performance of Moog components. Every element of the Simulation Table is thoughtfully integrated in the engineering design to offer unsurpassed performance, reliability and longevity.

SERVO VALVES



The Simulation Table incorporates 6 three-stage Moog Servo Valves (one per actuator). Moog Servo Valves are known for their exact tolerances, high performance and durability. These three-stage Servo Valves were developed for applications that require high flow rates and performance. Our Servo

Valves are the preferred choice of leading test engineers and set the world standard for hydraulic Servo Valve performance.

BALL JOINTS



Actuator joints ensure the smoothest possible movement and significant angular displacement via a spherical ball swivel joint on each actuator end. These ball joints are designed to allow large angular displacement with maximum stiffness and zero backlash.

Ball joint design

A “superbolt” or “multi-jackbolt tensioner” is used as a direct hex nut replacement. They spin onto your existing stud and provide an improved way to assemble the joint, as they are used to tighten the joint in pure tension. Ordinary hand tools are used to tighten.

TEST ACTUATORS

Six fatigue-rated actuators described as hydrostatic bearings hydraulic test actuators. They are engineered to deliver consistent performance over hundreds of millions of cycles for our next generation Simulation Table. They provide increased reliability, stiffness and increased side load capabilities. They have a robust design which offers low maintenance due to improved seal life (advanced rod coating), and improved cushion design (improved energy dissipation).



Hydraulic Actuator Design

Design Pressure	210 bar (3,000 psi)
Actuator Peak Force	54 kN (12.2 kip)
Total Stroke (Incl. Cushions)	272 mm (10.7 in)
Working Stroke	204 mm (8.0 in)
Cushion Length	15 mm (0.59 in)
Hydrostatic Bearing design	8 pockets

- Innovative 8 pocket hydrostatic bearing for improves side load test capabilities and less energy needs
- Higher level of dynamic performance, reliability and longevity
- Advanced rod coating ensures improved seal wear for longer life and less maintenance
- Advanced cushion design allows improved energy dissipation for higher reliability and safety
- Innovative design for less maintenance

TEST MANIFOLDS

The Test Manifold is used to control the Simulation Table hexapod. It is fully integrated with the motion base, but includes a self-contained service test manifold for flexibility in installing the Simulation Tables. The hydraulic circuit logic and functionality can be engineered to meet your exact performance, safety and mounting requirements. Application specific circuits enhance machine performance, reduce system cost and increase safety.

The Moog Test Manifold systems deliver proven performance in a wide variety of test environments. These are designed to facilitate the use of multiple test rigs from a common hydraulic supply. They provide total flexibility and efficient operation in automotive test labs around the world.

A Manifold Control Unit can be used to control the manifolds, and a Matrix Driver Unit can be used to connect the safety systems for user defined configurations.

HYDRAULIC INTERFACES

Hydraulic Distribution System	
Oil Requirements	
System Fluid	Mobil DTE-25, Shell Tellus 46, or equivalent
System Fluid	Mobil DTE-24, Shell Tellus 32, or equivalent
Filtration Requirements	To prolong the operational life of active hydraulic components, the hydraulic fluid should be maintained at a cleanliness level of ISO 4406 (SAE J1165) 16/14/11.
Pressure	
Operating Pressure	210 bar (3,000 psi)
Maximum Return Pressure	14 bar (200 psi)
Maximum Drain Pressure	3.5 bar (50 psi)
Operating Temperature	Hydraulic oil temperature should be maintained between 24 °C (75 °F) and 57 °C (135 °F)

Hydraulic Manifolds for actuators	
Manifold Ports	SAE four bolt metric flange connection per ISO 6162 TYPE 1 SAE Straight Thread O-ring port - ISO 11926-1
Hydraulic Fitting Requirements Standard Fittings Optional Fittings	SAE O-Ring Face Seal (ORFS) "Seal-Lok" ISO 8434-3 BSPP O-Ring 24" Cone Flareless "EO2" - ISO 8434-4
Servo Valves Standard Response High Response	G761 Series or 079-100 Series G761 Series or 079-100 Series

TEST DISTRIBUTION MANIFOLD



The Test Distribution Manifold is fully integrated into the Simulation Table assembly and creates an optimum configuration for the layout of the hoses to the actuators. Optional items can be connected to this Test Distribution Manifold for convenience and flexibility.

TEST SERVICE MANIFOLD



The Test Service Manifold used on the Simulation Table is capable of a peak flow of 1,140 lpm (300 gpm) at 210 bar (3,000 psi).

It contains a 3 micron filter in the pilot line, and 25 micron filters for the pressure line. Pulsation dampener accumulators are installed in the pressure, pilot and tank lines.

Control valves are used to control pressure and flow to ensure the system meets all safety requirements.

A HIGHER LEVEL OF SUPPORT

Five point inspection process

Our number one goal is to eliminate downtime and make repairs that will deliver reliability and cost savings for years to come. When you send in your repair, it must work like new when you get it back. This is the Moog Global Support™ promise.

- Incoming inspection will provide the customer details on the performance of the actuator assembly such as leakage and response. The inspection will also provide details to our technicians in regards to critical performance specs that need to be addressed.
- Technicians will then review engineering notes for any design improvements that may have been initiated since inception.
- Actuator assembly will get completely disassembled to piece parts. Aqueous Ultrasonic cleaners are used to thoroughly clean each component before inspection and dimensional checks. Any components found to worn will be replaced with OEM parts. Critical components such as fitted rod and bearings will be dimensionally checked to ensure the component meets the print criteria. A complete seal kit replacement will be installed to insure integrity of the structure.
- The Servo Valve will be removed and sent through the same rigorous evaluation, disassembly and test.
- Finally, the assembly will be tested to original specs to ensure the overhaul unit meets all design and performance criteria as new.

Moog engineering on call for you

Delivering world-class motion control products and solutions means taking customer support far beyond the initial sale. It requires a dedicated approach to solving your problems, addressing your machine challenges and helping you achieve maximum productivity on a daily basis. In today's competitive manufacturing environment, machine performance plays a significant role in determining your bottom line. Moog Global Support™ is key to achieving cost-effective machine operation, day in and day out.

Actuator repair capabilities

Moog Global Support™ is designed to keep your critical machines up and running at peak performance with only 100% genuine Moog replacement parts. Only Moog replacement parts can deliver the reliability, versatility and long life that you would expect from a world leader in motion control solutions. Each Moog part delivers essential components with precise dimensions, close tolerances and specific materials specifications. Because we understand the key role our parts play in the overall operation of your machine, we carefully inspect and test each repair to identify only those components that need replacement.

Take the next step

Isn't it time you worked with a partner who can offer both the world-class products and collaborative expertise you need to reach the next level of performance? Contact us today and see for yourself the difference the right partner can make.



TAKE A CLOSER LOOK.

Moog designs a range of products that complement the performance of those featured in this catalog. Visit our Web site for more information and the Moog facility nearest you

Argentina
+54 11 4326 5916
info.argentina@moog.com

India
+91 80 4057 6605
info.india@moog.com

Singapore
+65 677 36238
info.singapore@moog.com

Australia
+61 3 9561 6044
info.australia@moog.com

Ireland
+353 21 451 9000
info.ireland@moog.com

South Africa
+27 12 653 6768
info.southafrica@moog.com

Brazil
+55 11 3572 0400
info.brazil@moog.com

Italy
+39 0332 421 111
info.italy@moog.com

Spain
+34 902 133 240
info.spain@moog.com

Canada
+1 716 652 2000
info.canada@moog.com

Japan
+81 46 355 3767
info.japan@moog.com

Sweden
+46 31 680 060
info.sweden@moog.com

China
+86 21 2893 1600
info.china@moog.com

Korea
+82 31 764 6711
info.korea@moog.com

Switzerland
+41 71 394 5010
info.switzerland@moog.com

Finland
+358 10 422 1840
info.finland@moog.com

Luxembourg
+352 40 46 401
info.luxembourg@moog.com

United Kingdom
+44 168 429 6600
info.uk@moog.com

France
+33 1 4560 7000
info.france@moog.com

The Netherlands
+31 252 462 000
test@moog.com

USA
+1 716 652 2000
info.usa@moog.com

Germany
+49 7031 622 0
info.germany@moog.com

Norway
+47 6494 1948
info.norway@moog.com

Hong Kong
+852 2 635 3200
info.hongkong@moog.com

Russia
+7 831 713 1811
info.russia@moog.com

www.moog.com/test

Moog is a registered trademark of Moog Inc. and its subsidiaries. All trademarks as indicated herein are the property of Moog Inc. and its subsidiaries.

©2010 Moog Inc. All rights reserved. All changes are reserved.

Hydraulic Simulation Table
Moog/Rev.5, December 2010, Id. CDL28939-en